



## HIGHLIGHTS OF PRESCRIBING INFORMATION

These HIGHLIGHTS do not include all the information needed to use EDARBI safely and effectively. See full prescribing information for EDARBI.

Edarbi (azilsartan medoxomil) tablets, for oral use  
Initial U.S. Approval: 2011

<p><b>WARNING: FETAL TOXICITY</b></p> <p>See full prescribing information for complete boxed warning.</p> <ul style="list-style-type: none"><li>• When pregnancy is detected, discontinue Edarbi as soon as possible. (5.1, 8.1)</li><li>• Drugs that act directly on the renin-angiotensin system can cause injury and death to the developing fetus. (5.1, 8.1)</li></ul>
---

**INDICATIONS AND USAGE**

Edarbi is an angiotensin II receptor blocker indicated for the treatment of hypertension in adults, to lower blood pressure. Lowering blood pressure reduces the risk of fatal and nonfatal cardiovascular events, primarily strokes and myocardial infarctions. Edarbi may be used either alone or in combination with other antihypertensive agents. (1)

**DOSAGE AND ADMINISTRATION**

The recommended dose in adults is 80 mg taken once daily. Consider a starting dose of 40 mg for patients who are treated with high doses of diuretics. (2.1)

Edarbi may be administered with or without food. (2.1)  
Edarbi may be administered with other antihypertensive agents. (2.1)

**DOSAGE FORMS AND STRENGTHS**

Tablets: 40 mg and 80 mg. (3)

**CONTRAINDICATIONS**

- Do not coadminister aliskiren-containing products with Edarbi in patients with diabetes. (4)

**WARNINGS AND PRECAUTIONS**

- Correct volume or salt depletion prior to administration of Edarbi. (5.2)
- Monitor for worsening renal function in patients with renal impairment. (5.3)

**ADVERSE REACTIONS**

The most common adverse reaction in adults was diarrhea (2%). (6.1)

To report SUSPECTED ADVERSE REACTIONS, contact Azurity Pharmaceuticals, Inc. at 1-800-461-7449 or FDA at 1-800-FDA-1088 or www.fda.gov/medwatch.

**DRUG INTERACTIONS**

Dual inhibition of the renin-angiotensin system: Increased risk of renal impairment, hypotension, and hyperkalemia. (7)  
Lithium: Increases in serum lithium concentrations and lithium toxicity. (7)

**USE IN SPECIFIC POPULATIONS**

- **Lactation:** Breastfeeding is not recommended. (8.2)
- **Geriatric Patients:** Abnormally high serum creatinine values were more likely to be reported for patients age 75 or older. No overall difference in efficacy versus younger patients, but greater sensitivity of some older individuals cannot be ruled out. (8.5)
- In patients with an activated renin-angiotensin system, as by volume- or salt-depletion, renin-angiotensin-aldosterone system (RAAS) blockers such as azilsartan medoxomil can cause excessive hypotension. In susceptible patients, e.g., with renal artery stenosis, RAAS blockers can cause renal failure (5.2, 5.3).

See 17 for PATIENT COUNSELING INFORMATION and FDA-approved patient labeling  
Revised: 01/2024

<b>FULL PRESCRIBING INFORMATION:</b>	<b>8 USE IN SPECIFIC POPULATIONS</b>
<b>CONTENTS*</b>	8.1 Pregnancy
<b>WARNING: Fetal Toxicity</b>	8.2 Lactation
<b>1 INDICATIONS AND USAGE</b>	8.4 Pediatric Use
<b>2 DOSAGE AND ADMINISTRATION</b>	8.5 Geriatric Use
2.1 Recommended Dose	8.6 Renal Impairment
2.2 Handling Instructions	8.7 Hepatic Impairment
<b>3 DOSAGE FORMS AND STRENGTHS</b>	<b>10 OVERDOSAGE</b>
<b>4 CONTRAINDICATIONS</b>	<b>11 DESCRIPTION</b>
<b>5 WARNINGS AND PRECAUTIONS</b>	<b>12 CLINICAL PHARMACOLOGY</b>
5.1 Fetal Toxicity	12.1 Mechanism of Action
5.2 Hypotension in Volume- or Salt-Depleted Patients	12.2 Pharmacodynamics
5.3 Impaired Renal Function	12.3 Pharmacokinetics
<b>6 ADVERSE REACTIONS</b>	<b>13 NONCLINICAL TOXICOLOGY</b>
6.1 Clinical Trials Experience	13.1 Carcinogenesis, Mutagenesis, Impairment of Fertility
6.2 Postmarketing Experience	<b>14 CLINICAL STUDIES</b>
<b>7 DRUG INTERACTIONS</b>	<b>16 HOW SUPPLIED/STORAGE AND HANDLING</b>
7.1 Non-steroidal Anti-Inflammatory Agents, including Selective Cyclooxygenase-2 Inhibitors (COX-2 Inhibitors)	<b>17 PATIENT COUNSELING INFORMATION</b>
7.2 Dual Blockade of the Renin-Angiotensin System (RAS)	*Sections or subsections omitted from the full prescribing information are not listed
7.3 Lithium	

**WARNING: FETAL TOXICITY**

- When pregnancy is detected, discontinue Edarbi as soon as possible [see Warnings and Precautions (5.1) and Use in Specific Populations (8.1)].
- Drugs that act directly on the renin-angiotensin system can cause injury and death to the developing fetus [see Warnings and Precautions (5.1) and Use in Specific Populations (8.1)].

**1 INDICATIONS AND USAGE**

Edarbi is indicated for the treatment of hypertension in adults, to lower blood pressure. Lowering blood pressure reduces the risk of fatal and nonfatal cardiovascular events, primarily strokes and myocardial infarctions. These benefits have been seen in controlled trials of antihypertensive drugs from a wide variety of pharmacologic classes, including the class to which this drug principally belongs. There are no controlled trials demonstrating risk reduction with Edarbi.

Control of high blood pressure should be part of comprehensive cardiovascular risk management, including, as appropriate, lipid control, diabetes management, antithrombotic therapy, smoking cessation, exercise, and limited sodium intake. Many patients will require more than one drug to achieve blood pressure goals. For specific advice on goals and management, see published guidelines, such as those of the National High Blood Pressure Education Program's Joint National Committee on Prevention, Detection, Evaluation, and Treatment of High Blood Pressure (JNC).

Numerous antihypertensive drugs, from a variety of pharmacologic classes and with different mechanisms of action, have been shown in randomized controlled trials to reduce cardiovascular morbidity and mortality, and it can be concluded that it is blood pressure reduction, and not some other pharmacologic property of the drugs, that is largely responsible for those benefits. The largest and most consistent cardiovascular outcome benefit has been a reduction in the risk of stroke, but reductions in myocardial infarction and cardiovascular mortality also have been seen regularly.

Elevated systolic or diastolic pressure causes increased cardiovascular risk, and the absolute risk increase per mmHg is greater at higher blood pressures, so that even modest reductions of severe hypertension can provide substantial benefit. Relative risk reduction from blood pressure reduction is similar across populations with varying absolute risk, so the absolute benefit is greater in patients who are at higher risk independent of their hypertension (for example, patients with diabetes or hyperlipidemia), and such patients would be expected to benefit from more aggressive treatment to a lower blood pressure goal.

Some antihypertensive drugs have smaller blood pressure effects (as monotherapy) in black patients, and many antihypertensive drugs have additional approved indications and effects (e.g., on angina, heart failure, or diabetic kidney disease). These considerations may guide selection of therapy.

Edarbi may be used alone or in combination with other antihypertensive agents.

**2 DOSAGE AND ADMINISTRATION**

**2.1 Recommended Dose**

The recommended dose in adults is 80 mg taken orally once daily. Consider a starting dose of 40 mg for patients who are treated with high doses of diuretics.

**2.2 Handling Instructions**

Do not repackage Edarbi. Dispense and store Edarbi in its original container to protect Edarbi from light and moisture.

**3 DOSAGE FORMS AND STRENGTHS**

Edarbi is supplied as white to nearly white round tablets in the following dosage strengths:

- 40-mg tablets – debossed “ASL” on one side and “40” on the other
- 80-mg tablets – debossed “ASL” on one side and “80” on the other

**4 CONTRAINDICATIONS**

Do not coadminister aliskiren-containing products with Edarbi in patients with diabetes [see Drug Interactions (7)].

**5 WARNINGS AND PRECAUTIONS**

**5.1 Fetal Toxicity**

Edarbi can cause fetal harm when administered to a pregnant woman. Use of drugs that act on the renin-angiotensin system during the second and third trimesters of pregnancy reduces fetal renal function and increases fetal and neonatal morbidity and death. Resulting oligohydramnios can be associated with fetal lung hypoplasia and skeletal deformations. Potential neonatal adverse effects include skull hypoplasia, anuria, hypotension, renal failure, and death. When pregnancy is detected, discontinue Edarbi as soon as possible [see Use in Specific Populations (8.1)].

**5.2 Hypotension in Volume- or Salt-Depleted Patients**

In patients with an activated renin-angiotensin system, such as volume- and/or salt-depleted patients (e.g., those being treated with high doses of diuretics), symptomatic hypotension may occur after initiation of treatment with Edarbi. Correct volume or salt depletion prior to administration of Edarbi, or start treatment at 40 mg. If hypotension does occur, the patient should be placed in the supine position and, if necessary, given an intravenous infusion of normal saline. A transient hypotensive response is not a contraindication to further treatment, which usually can be continued without difficulty once the blood pressure has stabilized.

**5.3 Impaired Renal Function**

As a consequence of inhibiting the renin-angiotensin system, changes in renal function may be anticipated in susceptible individuals treated with Edarbi. In patients whose renal function may depend on the activity of the renin-angiotensin system (e.g., patients with severe congestive heart failure, renal artery stenosis, or volume depletion), treatment with angiotensin-converting enzyme inhibitors and angiotensin receptor blockers has been associated with oliguria or progressive azotemia and rarely with acute renal failure and death. Similar results may be anticipated in patients treated with Edarbi [see Drug Interactions (7), Use in Specific Populations (8.6), and Clinical Pharmacology (12.3)].

In studies of ACE inhibitors in patients with unilateral or bilateral renal artery stenosis, increases in serum creatinine or blood urea nitrogen have been reported. There has been no long-term use of Edarbi in patients with unilateral or bilateral renal artery stenosis, but similar results may be expected.

**6 ADVERSE REACTIONS**

**6.1 Clinical Trials Experience**

Because clinical trials are conducted under widely varying conditions, adverse reaction rates observed in the clinical trials of a drug cannot be directly compared to rates in the clinical trials of another drug and may not reflect the rates observed in practice.

A total of 4814 patients were evaluated for safety when treated with Edarbi at doses of 20, 40, or 80 mg in clinical trials. This includes 1704 patients treated for at least six months; of these, 588 were treated for at least one year.

Treatment with Edarbi was well-tolerated with an overall incidence of adverse reactions similar to placebo. The rate of withdrawals due to adverse events in placebo-controlled monotherapy and combination therapy trials was 2.4% (19/801) for placebo, 2.2% (24/1072) for Edarbi 40 mg, and 2.7% (29/1074) for Edarbi 80 mg. The most common adverse event leading to discontinuation, hypotension/orthostatic hypotension, was reported by 0.4% (8/2146) patients randomized to Edarbi 40 mg or 80 mg compared to 0% (0/801) patients randomized to placebo. Generally, adverse reactions were mild, not dose related, and similar regardless of age, gender, and race.

In placebo-controlled monotherapy trials, diarrhea was reported up to 2% in patients treated with Edarbi 80 mg daily compared with 0.5% of patients on placebo.

Other adverse reactions with a plausible relationship to treatment that have been reported with an incidence of  $\geq$ 0.3% and greater than placebo in more than 3300 patients treated with Edarbi in controlled trials are listed below:

*Gastrointestinal Disorders:* nausea  
*General Disorders and Administration Site Conditions:* asthenia, fatigue  
*Musculoskeletal and Connective Tissue Disorders:* muscle spasm  
*Nervous System Disorders:* dizziness, dizziness postural  
*Respiratory, Thoracic, and Mediastinal Disorders:* cough

**6.2 Postmarketing Experience**

The following adverse reactions have been identified during the postmarketing use of EDARBI. Because these reactions are reported voluntarily from a population of uncertain size, it is not always possible to reliably estimate their frequency or establish a causal relationship to drug exposure.

- Rash
- Pruritus
- Angioedema

**7 DRUG INTERACTIONS**

**7.1 Non-steroidal Anti-Inflammatory Agents, including Selective Cyclooxygenase-2 Inhibitors (COX-2 Inhibitors)**

In patients who are elderly, volume-depleted (including those on diuretic therapy), or who have compromised renal function, coadministration of NSAIDs, including selective COX-2 inhibitors, with angiotensin II receptor antagonists, including azilsartan, may result in deterioration of renal function, including possible acute renal failure. These effects are usually reversible. Monitor renal function periodically in patients receiving azilsartan and NSAID therapy.

The antihypertensive effect of angiotensin II receptor antagonists, including azilsartan, may be attenuated by NSAIDs, including selective COX-2 inhibitors.

**7.2 Dual Blockade of the Renin-Angiotensin System (RAS)**

Dual blockade of the RAS with angiotensin receptor blockers, ACE inhibitors, or aliskiren is associated with increased risks of hypotension, hyperkalemia, and changes in renal function (including acute renal failure) compared to monotherapy. Most patients receiving the combination of two RAS inhibitors do not obtain any additional benefit compared to monotherapy. In general, avoid combined use of RAS inhibitors. Closely monitor blood pressure, renal function and electrolytes in patients on Edarbi and other agents that affect the RAS.

Do not coadminister aliskiren with Edarbi in patients with diabetes. Avoid use of aliskiren with Edarbi in patients with renal impairment (GFR <60 mL/min).

**7.3 Lithium**

Increases in serum lithium concentrations and lithium toxicity have been reported during concomitant administration of lithium with angiotensin II receptor agonists. Monitor serum lithium levels during concomitant use.

**8 USE IN SPECIFIC POPULATIONS**

**8.1 Pregnancy**

**Risk Summary**

Edarbi can cause fetal harm when administered to a pregnant woman. Use of drugs that act on the renin-angiotensin system during the second and third trimesters of pregnancy reduces fetal renal function and increases fetal and neonatal morbidity and death (see Clinical Considerations). Most epidemiologic studies examining fetal abnormalities after exposure to antihypertensive use in the first trimester have not distinguished drugs affecting the renin-angiotensin system from other antihypertensive agents.

When pregnancy is detected, discontinue Edarbi as soon as possible.

The estimated background risk of major birth defects and miscarriage for the indicated population is unknown. All pregnancies have a background risk of birth defect, loss, or other adverse outcomes. In the U.S. general population, the estimated background risk of major birth defects and miscarriage in clinically recognized pregnancies is 2-4% and 15-20%, respectively.

**Clinical Considerations**

*Disease-associated maternal and/or embryo/fetal risk*

Hypertension in pregnancy increases the maternal risk for pre-eclampsia, gestational diabetes, premature delivery, and delivery complications (e.g., need for cesarean section, and post-partum hemorrhage). Hypertension increases the fetal risk for intrauterine growth restriction and intrauterine death. Pregnant women with hypertension should be carefully monitored and managed accordingly.

*Fetal/Neonatal adverse reactions*

Oligohydramnios in pregnant women who use drugs affecting the renin-angiotensin system in the second and third trimesters can result in the following: reduced fetal renal function leading to anuria and renal failure, fetal lung hypoplasia, skeletal deformations, including skull hypoplasia, hypotension and death.

Perform serial ultrasound examinations to assess the intra-amniotic environment. Fetal testing may be appropriate, based on the week of pregnancy. Patients and physicians should be aware, however, that oligohydramnios may not appear until after the fetus has sustained irreversible injury.

Closely observe infants with histories of in utero exposure to Edarbi for hypotension, oliguria, and hyperkalemia. In neonates with a history of in utero exposure to Edarbi, if oliguria or hypotension occurs, support blood pressure and renal perfusion. Exchange transfusions or dialysis may be required as a means of reversing hypotension and/or substituting for disordered renal function.

**Data**

**Animal Data**

In peri- and postnatal rat development studies, adverse effects on pup viability, delayed incisor eruption and dilatation of the renal pelvis along with hydronephrosis were seen when azilsartan medoxomil was administered to pregnant and nursing rats at 1.2 times the MRHD on a mg/m<sup>2</sup> basis. Reproductive toxicity studies indicated that azilsartan medoxomil was not teratogenic when administered at oral doses up to 1000 mg azilsartan medoxomil/kg/day to pregnant rats (122 times the MRHD on a mg/m<sup>2</sup> basis) or up to 50 mg azilsartan medoxomil/kg/day to pregnant rabbits (12 times the MRHD on a mg/m<sup>2</sup> basis). M-II also was not teratogenic in rats or rabbits at doses up to 3000 mg M-II/kg/day. Azilsartan crossed the placenta and was found in the fetuses of pregnant rats and was excreted into the milk of lactating rats.

**8.2 Lactation**

**Risk Summary**

There is limited information regarding the presence of azilsartan in human milk, the effects on the breastfed infant, or the effects on milk production. Azilsartan is present in rat milk. Because of the potential for adverse effects on the nursing infant, advise a nursing woman that breastfeeding is not recommended during treatment with Edarbi.

**8.4 Pediatric Use**

Safety and effectiveness in pediatric patients have not been established. Use of Edarbi is not recommended in children less than 2 years of age. It is not known whether post-natal use of azilsartan in patients less than 2 years of age, before maturation of kidney function is complete, has a long-term deleterious effect on the kidney.

**Juvenile Animal Studies**

In juvenile rat studies, dosing with azilsartan starting on post-natal day 14 (equivalent to a neonate with morphologically and functionally immature kidneys) resulted in increased incidence of edema of the renal papilla at the end of 4-week recovery period that was non-reversible. These findings occurred in the high-dose group (10 mg/kg) and were not observed in juvenile rats dosed starting on post-natal day 21 (equivalent to a human approximately 2 years of age) or adult rats.

**8.5 Geriatric Use**

No dose adjustment with Edarbi is necessary in elderly patients. Of the total patients in clinical studies with Edarbi, 26% were elderly (65 years of age and older); 5% were 75 years of age and older. Abnormally high serum creatinine values were more likely to be reported for patients age 75 or older. No other differences in safety or effectiveness were observed between elderly patients and younger patients, but greater sensitivity of some older individuals cannot be ruled out [see Clinical Pharmacology (12.3)].

**8.6 Renal Impairment**

Dose adjustment is not required in patients with mild-to-severe renal impairment or end-stage renal disease. Patients with moderate to severe renal impairment are more likely to report abnormally high serum creatinine values.

**8.7 Hepatic Impairment**

No dose adjustment is necessary for subjects with mild or moderate hepatic impairment. Edarbi has not been studied in patients with severe hepatic impairment [see Clinical Pharmacology (12.3)].

**10 OVERDOSAGE**

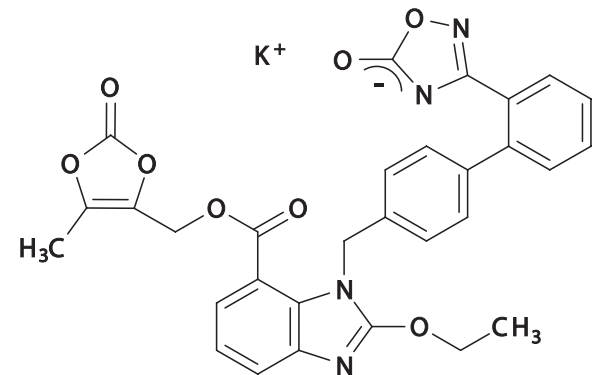
Limited data are available related to overdosage in humans. During controlled clinical trials in healthy subjects, once-daily doses up to 320 mg of Edarbi were administered for seven days and were well tolerated. In the event of an overdose, supportive therapy should be instituted as dictated by the patient's clinical status. Azilsartan is not dialyzable [see Clinical Pharmacology (12.3)].

**11 DESCRIPTION**

Edarbi (azilsartan medoxomil), a prodrug, is hydrolyzed to azilsartan in the gastrointestinal tract during absorption. Azilsartan is an angiotensin II receptor blocker.

The drug substance used in the drug product formulation is the potassium salt of azilsartan medoxomil, also known by the US accepted name of azilsartan kamedoxomil and is chemically described as (5-Methyl-2-oxo-1,3-dioxol-4-yl)methyl 2-ethoxy-1-[[2-(5-oxo-4,5-dihydro-1,2,4-oxadiazol-3-yl)phenyl-4-yl]methyl]-1H-benzimidazole-7-carboxylate monopotassium salt.

Its empirical formula is C<sub>30</sub>H<sub>28</sub>KN<sub>4</sub>O<sub>8</sub> and its structural formula is:



Azilsartan kamedoxomil is a white to nearly white powder with a molecular weight of 606.62. It is practically insoluble in water and freely soluble in methanol.

Edarbi is available for oral use as tablets. The tablets have a characteristic odor. Each Edarbi tablet contains 42.68 or 85.36 mg of azilsartan kamedoxomil, which is equivalent to containing 40 mg or 80 mg respectively, of azilsartan medoxomil and the following inactive ingredients: mannitol, fumaric acid, sodium hydroxide, hydroxypropyl cellulose, croscarmellose sodium, microcrystalline cellulose, and magnesium stearate.

**12 CLINICAL PHARMACOLOGY**

**12.1 Mechanism of Action**

Angiotensin II is formed from angiotensin I in a reaction catalyzed by angiotensin-converting enzymes (ACE, kinase II). Angiotensin II is the principal pressor agent of the renin-angiotensin system, with effects that include vasoconstriction, stimulation of synthesis and release of aldosterone, cardiac stimulation, and renal reabsorption of sodium. Azilsartan medoxomil is an orally administered prodrug that is rapidly converted by esterases during absorption to the active moiety, azilsartan. Azilsartan blocks the vasoconstrictor and aldosterone- secreting effects of angiotensin II by selectively blocking the binding of angiotensin II to the AT<sub>1</sub> receptor in many tissues, such as vascular smooth muscle and the adrenal gland. Its action is, therefore, independent of the pathway for angiotensin II synthesis.

An AT<sub>2</sub> receptor is also found in many tissues, but this receptor is not known to be associated with cardiovascular homeostasis. Azilsartan has more than a 10,000-fold greater affinity for the AT<sub>1</sub> receptor than for the AT<sub>2</sub> receptor.



Blockade of the renin-angiotensin system with ACE inhibitors, which inhibit the biosynthesis of angiotensin II from angiotensin I, is widely used in the treatment of hypertension. ACE inhibitors also inhibit the degradation of bradykinin, a reaction catalyzed by ACE. Because azilsartan does not inhibit ACE (kinase II), it should not affect bradykinin levels. Whether this difference has clinical relevance is not yet known. Azilsartan does not bind to or block other receptors or ion channels known to be important in cardiovascular regulation.

Blockade of the angiotensin II receptor inhibits the negative regulatory feedback of angiotensin II on renin secretion, but the resulting increased plasma renin activity and angiotensin II circulating levels do not overcome the effect of azilsartan on blood pressure.

## 12.2 Pharmacodynamics

Azilsartan inhibits the pressor effects of an angiotensin II infusion in a dose-related manner. An azilsartan single dose equivalent to 32 mg azilsartan medoxomil inhibited the maximal pressor effect by approximately 90% at peak, and approximately 60% at 24 hours. Plasma angiotensin I and II concentrations and plasma renin activity increased while plasma aldosterone concentrations decreased after single and repeated administration of Edarbi to healthy subjects; no clinically significant effects on serum potassium or sodium were observed.

### Effect on Cardiac Repolarization

A thorough QT/QTc study was conducted to assess the potential of azilsartan to prolong the QT/QTc interval in healthy subjects. There was no evidence of QT/QTc prolongation at a dose of 320 mg of Edarbi.

## 12.3 Pharmacokinetics

### Absorption

Azilsartan medoxomil is hydrolyzed to azilsartan, the active metabolite, in the gastrointestinal tract during absorption. Azilsartan medoxomil is not detected in plasma after oral administration. Dose proportionality in exposure was established for azilsartan in the azilsartan medoxomil dose range of 20 mg to 320 mg after single or multiple dosing.

The estimated absolute bioavailability of azilsartan following administration of azilsartan medoxomil is approximately 60%. After oral administration of azilsartan medoxomil, peak plasma concentrations ( $C_{max}$ ) of azilsartan are reached within 1.5 to 3 hours. Food does not affect the bioavailability of azilsartan.

### Distribution

The volume of distribution of azilsartan is approximately 16 L. Azilsartan is highly bound to human plasma proteins (>99%), mainly serum albumin. Protein binding is constant at azilsartan plasma concentrations well above the range achieved with recommended doses.

In rats, minimal azilsartan-associated radioactivity crossed the blood-brain barrier. Azilsartan passed across the placental barrier in pregnant rats and was distributed to the fetus.

### Metabolism and Elimination

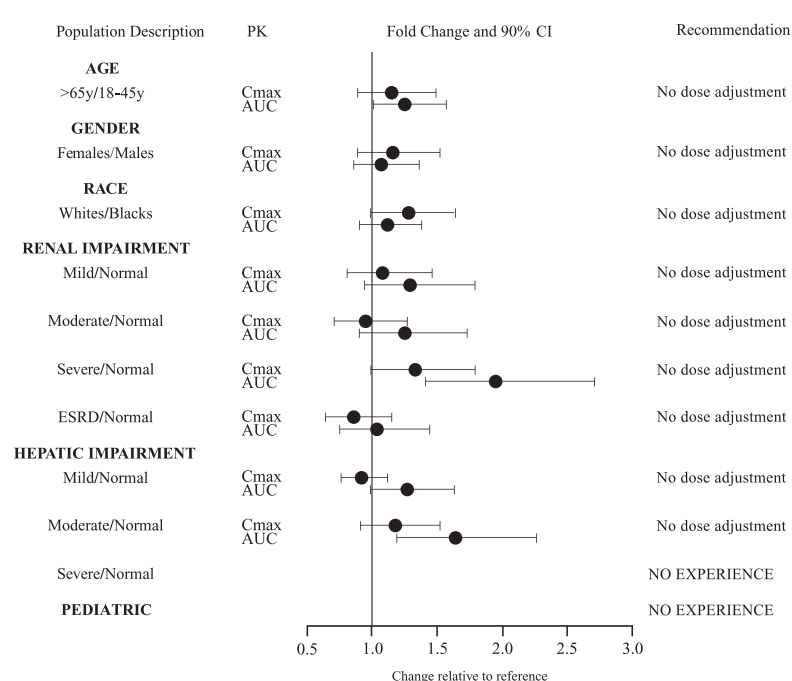
Azilsartan is metabolized to two primary metabolites. The major metabolite in plasma is formed by *O*-dealkylation, referred to as metabolite M-II, and the minor metabolite is formed by decarboxylation, referred to as metabolite M-I. Systemic exposures to the major and minor metabolites in humans were approximately 50% and less than 1% of azilsartan, respectively. M-I and M-II do not contribute to the pharmacologic activity of Edarbi. The major enzyme responsible for azilsartan metabolism is CYP2C9.

Following an oral dose of  $^{14}$ C-labeled azilsartan medoxomil, approximately 55% of radioactivity was recovered in feces and approximately 42% in urine, with 15% of the dose excreted in urine as azilsartan. The elimination half-life of azilsartan is approximately 11 hours and renal clearance is approximately 2.3 mL/min. Steady-state levels of azilsartan are achieved within five days, and no accumulation in plasma occurs with repeated once-daily dosing.

### Specific Populations

The effect of demographic and functional factors on the pharmacokinetics of azilsartan was studied in single and multiple dose studies. Pharmacokinetic measures indicating the magnitude of the effect on azilsartan are presented in Figure 1 as change relative to reference (test/reference). Effects are modest and do not call for dosage adjustment.

Figure 1. Impact of intrinsic factors on the pharmacokinetics of azilsartan



## Drug Interactions

No clinically significant drug interactions have been observed in studies of azilsartan medoxomil or azilsartan given with amlodipine, antacids, chlorthalidone, digoxin, fluconazole, glyburide, ketoconazole, metformin, pioglitazone, and warfarin. Therefore, Edarbi may be used concomitantly with these medications.

## 13 NONCLINICAL TOXICOLOGY

### 13.1 Carcinogenesis, Mutagenesis, Impairment of Fertility Carcinogenesis

Azilsartan medoxomil was not carcinogenic when assessed in 26-week transgenic (Tg.rash2) mouse and two-year rat studies. The highest doses tested (450 mg azilsartan medoxomil/kg/day in the mouse and 600 mg azilsartan medoxomil/kg/day in the rat) produced exposures to azilsartan that are 12 (mice) and 27 (rats) times the average exposure to azilsartan in humans given the maximum recommended human dose (MRHD, 80 mg azilsartan medoxomil/day). M-II was not carcinogenic when assessed in 26-week Tg.rash2 mouse and two-year rat studies. The highest doses tested (approximately 8000 mg M-II/kg/day [males] and 11,000 mg M-II/kg/day [females] in the mouse and 1000 mg M-II/kg/day [males] and up to 3000 mg M-II/kg/day [females] in the rat) produced exposures that are, on average, about 30 (mice) and seven (rats) times the average exposure to M-II in humans at the MRHD.

### Mutagenesis

Azilsartan medoxomil, azilsartan, and M-II were positive for structural aberrations in the Chinese Hamster Lung Cytogenetic Assay. In this assay, structural chromosomal aberrations were observed with the prodrug, azilsartan medoxomil, without metabolic activation. The active moiety, azilsartan was also positive in this assay both with and without metabolic activation. The major human metabolite, M-II was also positive in this assay during a 24-hour assay without metabolic activation.

Azilsartan medoxomil, azilsartan, and M-II were devoid of genotoxic potential in the Ames reverse mutation assay with *Salmonella typhimurium* and *Escherichia coli*, the *in vitro* Chinese Hamster Ovary Cell forward mutation assay, the *in vitro* mouse lymphoma (tk) gene mutation test, the *ex vivo* unscheduled DNA synthesis test, and the *in vivo* mouse and/or rat bone marrow micronucleus assay.

### Impairment of Fertility

There was no effect of azilsartan medoxomil on the fertility of male or female rats at oral doses of up to 1000 mg azilsartan medoxomil/kg/day (6000 mg/m<sup>2</sup> [approximately 122 times the MRHD of 80 mg azilsartan medoxomil/60 kg on a mg/m<sup>2</sup> basis]). Fertility of rats also was unaffected at doses of up to 3000 mg M-II/kg/day.

## 14 CLINICAL STUDIES

The antihypertensive effects of Edarbi have been demonstrated in a total of seven double-blind, randomized studies, which included five placebo-controlled and four active comparator-controlled studies (not mutually exclusive). The studies ranged from six weeks to six months in duration, at doses ranging from 20 mg to 80 mg once daily. A total of 5941 patients (3672 given

Edarbi, 801 given placebo, and 1468 given active comparator) with mild, moderate or severe hypertension were studied. Overall, 51% of patients were male and 26% were 65 years or older; 67% were white and 19% were black.

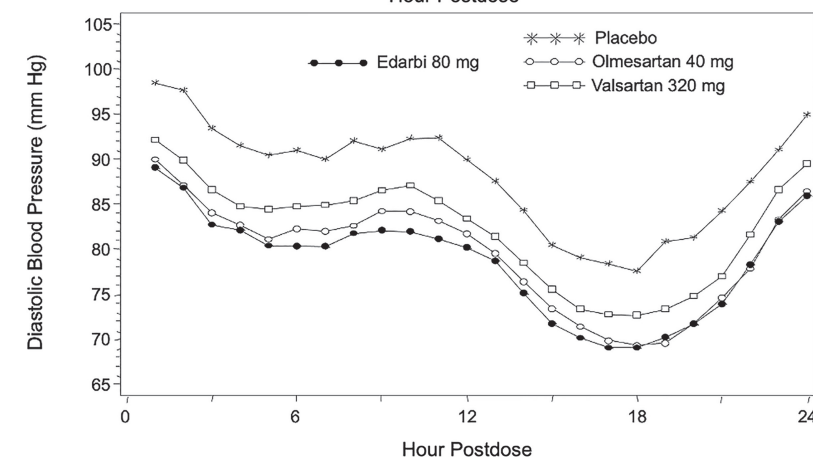
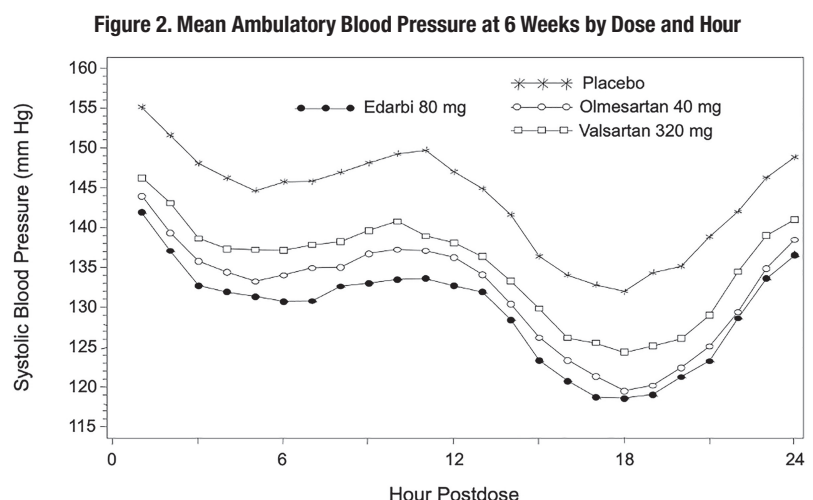
Two 6-week, randomized, double-blind studies compared the effect on blood pressure of Edarbi at doses of 40 mg and 80 mg, with placebo and with active comparators. Blood pressure reductions compared to placebo based on clinic blood pressure measurements at trough and 24-hour mean blood pressure by ambulatory blood pressure monitoring (ABPM) are shown in Table 1 for both studies.

Edarbi, 80 mg, was statistically superior to placebo and active comparators for both clinic and 24-hour mean blood pressure measurements.

	Study 1 N=1285		Study 2 N=989	
	Clinic Blood Pressure (Mean Baseline 157.4/92.5)	24 Hour Mean by ABPM (Mean Baseline 144.9/88.7)	Clinic Blood Pressure (Mean Baseline 159.0/91.8)	24 Hour Mean by ABPM (Mean Baseline 146.2/87.6)
<b>Edarbi 40 mg</b>	-14.6/-6.2	-13.2/-8.6	-12.4/-7.1	-12.1/-7.7
<b>Edarbi 80 mg</b>	-14.9/-7.5	-14.3/-9.4	-15.5/-8.6	-13.2/-7.9
<b>Olmesartan 40 mg</b>	-11.4/-5.3	-11.7/-7.7	-12.8/-7.1	-11.2/-7.0
<b>Valsartan 320 mg</b>	-9.5/-4.4	-10.0/-7.0		

In a study comparing Edarbi to valsartan over 24 weeks, similar results were observed. Most of the antihypertensive effect occurs within the first two weeks of dosing.

Figure 2 shows the 24-hour ambulatory systolic and diastolic blood pressure profiles at endpoint.



Other studies showed similar 24-hour ambulatory blood pressure profiles.

Edarbi has a sustained and consistent antihypertensive effect during long-term treatment, as shown in a study that randomized patients to placebo or continued Edarbi after 26 weeks. No rebound effect was observed following the abrupt cessation of Edarbi therapy.

Edarbi was effective in reducing blood pressure regardless of the age, gender, or race of patients, but the effect, as monotherapy, was smaller, approximately half, in black patients, who tend to have low renin levels. This has been generally true for other angiotensin II antagonists and ACE inhibitors.

Edarbi has about its usual blood pressure lowering effect size when added to a calcium channel blocker (amlodipine) or a thiazide-type diuretic (chlorthalidone).

There are no trials of Edarbi demonstrating reductions in cardiovascular risk in patients with hypertension, but at least one pharmacologically similar drug has demonstrated such benefits.

## 16 HOW SUPPLIED/STORAGE AND HANDLING

Edarbi tablets are unscored and white to nearly white, debossed with "ASL" on one side and "40" or "80" on the other.

Tablet	NDC 60631-xxx-xx
40 mg	040-30
80 mg	080-30

### Storage

Store at 25°C (77°F); excursions permitted to 15°-30°C (59°-86°F) [see USP Controlled Room Temperature]. Keep container tightly closed. Protect from moisture and light. Do not repack; dispense and store in original container.

## 17 PATIENT COUNSELING INFORMATION

Advise the patient to read the FDA-approved patient labeling (Patient Information)

### Pregnancy

Tell female patients of childbearing potential about the consequences of exposure to Edarbi during pregnancy. Discuss treatment options with women planning to become pregnant. Tell patients to report pregnancies to their physicians as soon as possible.

## Patient Information Edarbi (eh-DAR-bee) (azilsartan medoxomil) Tablets

Read this Patient Information leaflet before you start taking Edarbi and each time you get a refill. There may be new information. This information does not take the place of talking to your doctor about your medical condition or your treatment.

### What is the most important information I should know about Edarbi?

- Edarbi can cause harm or death to your unborn baby.
- Talk to your doctor about other ways to lower your blood pressure if you plan to become pregnant.
- If you become pregnant while taking Edarbi, tell your doctor right away. Your doctor may switch you to a different medicine to treat your high blood pressure.

### What is Edarbi?

Edarbi is a prescription medicine called an angiotensin II receptor blocker (ARB) used to treat high blood pressure (hypertension) in adults.

Your doctor may prescribe other medicines for you to take along with Edarbi to treat your high blood pressure.

It is not known if Edarbi is safe and effective in children under 18 years of age.

### What should I tell my doctor before taking Edarbi?

Before you take Edarbi, tell your doctor if you:

- have been told that you have abnormal body salt (electrolytes) levels in your blood
- are pregnant or plan to become pregnant. See "What is the most important information I should know about Edarbi?"
- are breastfeeding or plan to breastfeed. It is not known if Edarbi passes into your breast milk. You and your doctor should decide if you will take Edarbi or breastfeed. You should not do both. Talk with your doctor about the best way to feed your baby if you take Edarbi.

Tell your doctor about all the medicines you take, including prescription and nonprescription medicines, vitamins, and herbal supplements.

### Especially tell your doctor if you take:

- other medicines used to treat your high blood pressure or heart problem
- water pills (diuretic)

Ask your doctor if you are not sure if you are taking a medicine listed above.

Know the medicines you take. Keep a list of them and show it to your doctor or pharmacist when you get a new medicine.

### How should I take Edarbi?

- Your doctor will tell you how much Edarbi to take and when to take it. Follow his/her instructions.
- Edarbi can be taken with or without food.
- If you take too much Edarbi, call your doctor or go to the nearest hospital emergency room right away.

### What are the possible side effects of Edarbi? Edarbi may cause side effects, including:

- Harm or death to your unborn fetus if taken in the second or third trimester. See "What is the most important information I should know about Edarbi?"
- Low blood pressure (hypotension) and dizziness is most likely to happen if you also:
  - o take water pills (diuretics)
  - o are on a low-salt diet
  - o take other medicines that affect your blood pressure
  - o get sick with vomiting or diarrhea
  - o do not drink enough fluids

### If you feel faint or dizzy, lie down and call your doctor right away.

These are not all the possible side effects with Edarbi. Tell your doctor if you have any side effect that bothers you or that does not go away.

Call your doctor for medical advice about side effects. You may report side effects to FDA at 1-800-FDA-1088.

### How do I store Edarbi?

- Store Edarbi at 59°F to 86°F (15°C to 30°C).
- Store Edarbi in the original container that you received from your pharmacist or doctor. Do not put Edarbi into a different container.
- Keep Edarbi in a tightly closed container, and keep Edarbi out of the light.

### Keep Edarbi and all medicines out of the reach of children.

### General information about Edarbi.

Medicines are sometimes prescribed for purposes other than those listed in a Patient Information leaflet. Do not give Edarbi to other people, even if they have the same symptoms you have. It may harm them.

This Patient Information leaflet summarizes the most important information about Edarbi. If you would like more information, talk with your doctor. You can ask your pharmacist or doctor for information about Edarbi that is written for health professionals.

For more information, go to [www.edarbi.com](http://www.edarbi.com) or call 1-800-461-7449.

### What is high blood pressure (hypertension)?

Blood pressure is the force in your blood vessels when your heart beats and when your heart rests. You have high blood pressure when the force is too great.

High blood pressure makes the heart work harder to pump blood through the body and causes damage to the blood vessels. Edarbi tablets can help your blood vessels relax so your blood pressure is lower. Medicines that lower your blood pressure may lower your chance of having a stroke or heart attack.

### What are the ingredients in Edarbi?

Active ingredient: azilsartan medoxomil  
 Inactive ingredients: mannitol, fumaric acid, sodium hydroxide, hydroxypropyl cellulose, croscarmellose sodium, microcrystalline cellulose, and magnesium stearate.

Manufactured by:



Ireland  
 Manufactured for:



Woburn, MA 01801

Patent: [https://azurity.com/patents\\_and\\_trademarks/](https://azurity.com/patents_and_trademarks/)

This product's labeling may have been updated. For current Full Prescribing Information, please visit [www.edarbi.com](http://www.edarbi.com)

Edarbi is a trademark of Takeda Pharmaceutical Company Limited registered with the U.S. Patent and Trademark Office and used under license by Azurity Pharmaceuticals, Inc.

EB-P1-09 Rev. Jan2024